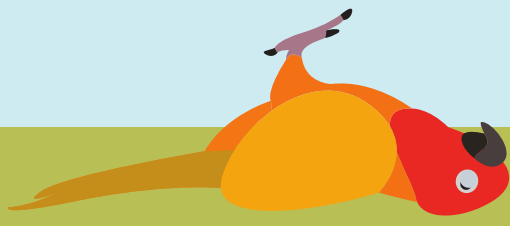
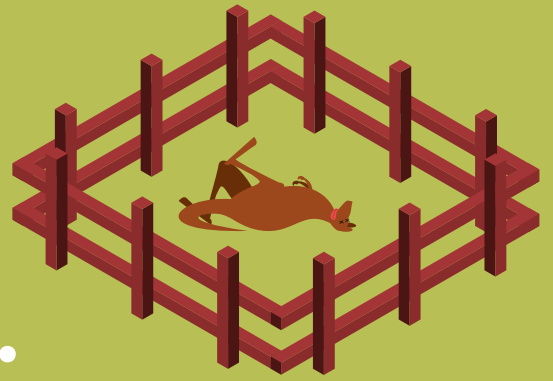


Animals are in trouble but you can help.

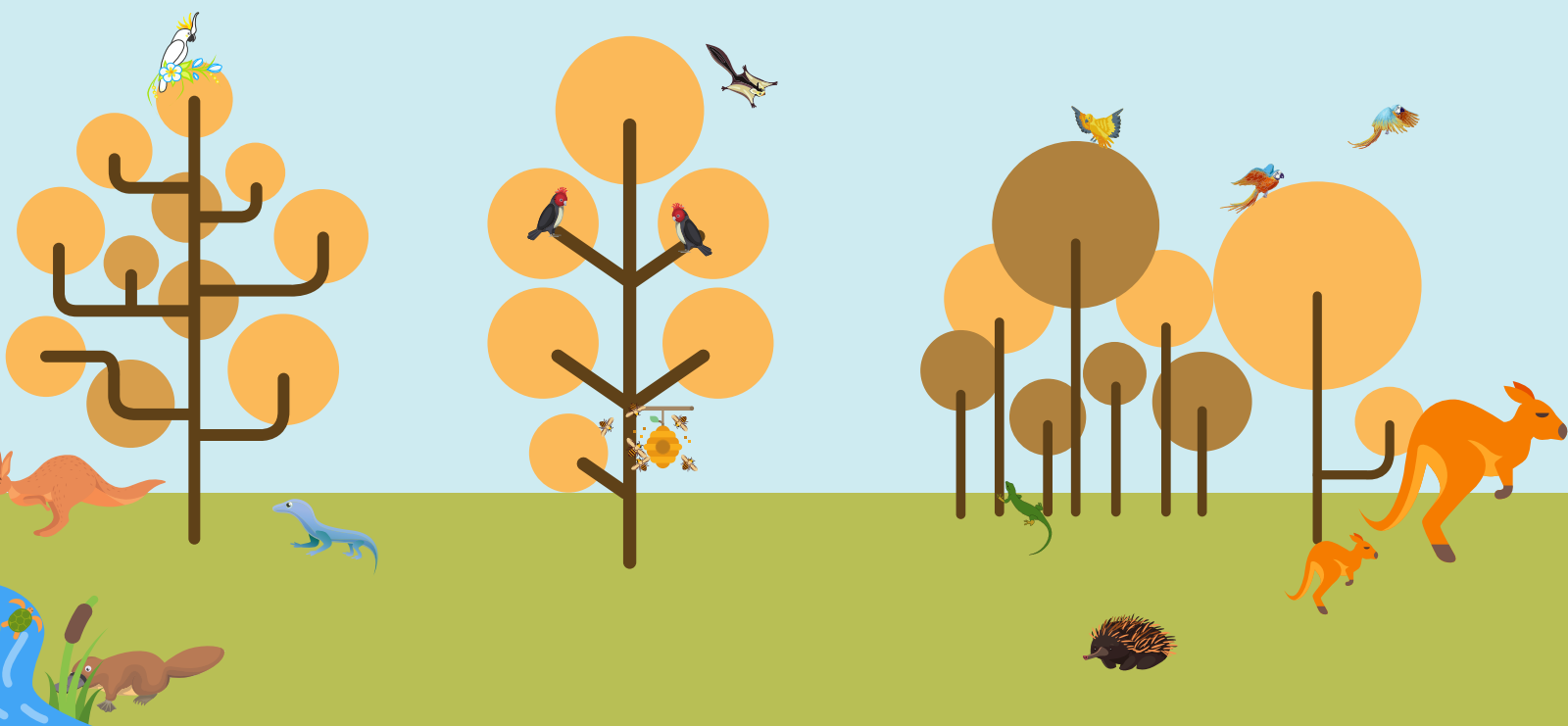


Why are they in trouble?

Put simply: Our creatures are getting trapped.



IN ORDER TO THRIVE, ANIMALS NEED TO MOVE.



BUT EMPTY PADDOCKS, ROADS, CITIES AND TOWNS ARE BLOCKING THEIR PATH.



Animals need to be able to escape threats like predators, wildfires and drought. They need to travel in order to find mates.



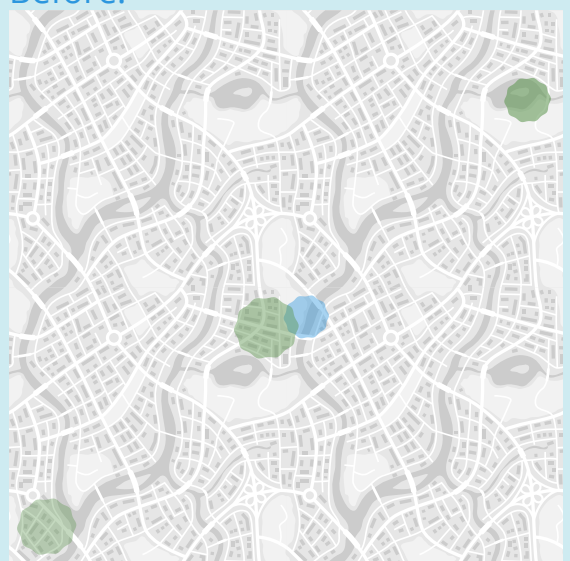
But safe habitats are becoming increasingly hard to find.

The solution?
Help us create
Wildlife Corridors.

A WILDLIFE CORRIDOR IS A STRING OF SAFE HABITATS AVAILABLE TO ANIMALS.

IDEALLY, THEY LINK UP ACROSS LARGE PARTS OF LAND OWNED BY DIFFERENT PEOPLE

Before:



After:



Everyone's property is part of something bigger. Like vital pieces in a much larger puzzle, the pieces need to link together in order for the wildlife corridor to work.



Ways you can help today:

IF YOU LIVE ON A FARM -

It's not just about planting trees, critters enjoy all sorts of habitats like grasslands, wetlands, bushes, old trees and even fallen trees. Make sure habitat spaces are never more than 100m apart.



IF YOU LIVE IN A TOWN OR CITY-

Put a bird bath in your backyard or on your balcony. Lizards love large rocks. Keep your cat indoors. Hang a possum box or plant native shrubs.



Speak to your neighbours, community groups and indigenous leaders about linking local habitats.



Added bonus: Wildlife Corridors also help combat climate change.

BUT WE CAN'T DO IT ALONE. SO...

How can you can do more to help?

GO TO:

biolinksalliance.org.au/protect-and-connect

AND FIND OUT HOW!





Want to dig a little deeper?



Keep scrolling to discover more.

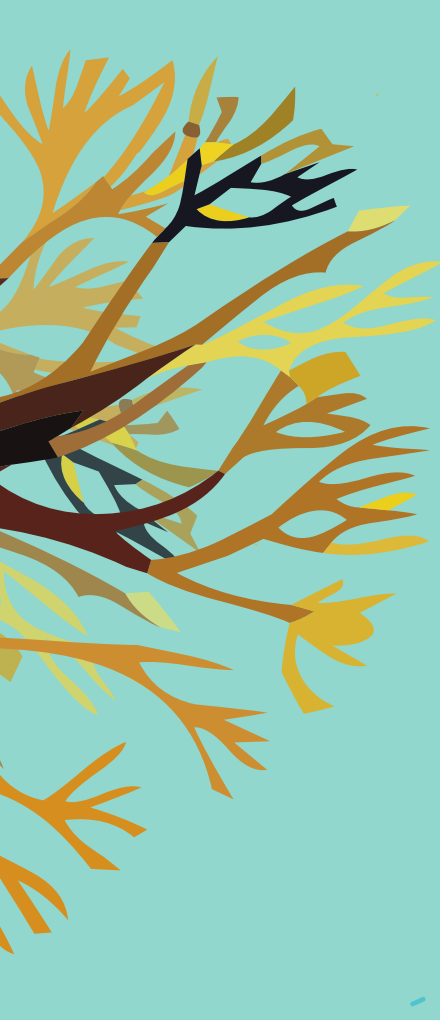




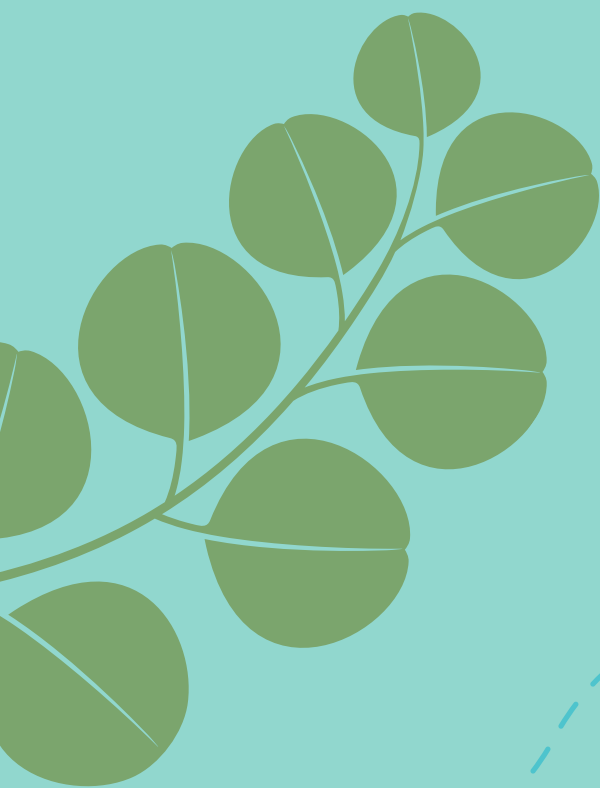
LARGE OLD TREES
ARE THE
SUPERHEROES
OF OUR LANDSCAPE.

BUT WHY ARE THEY SO
IMPORTANT?

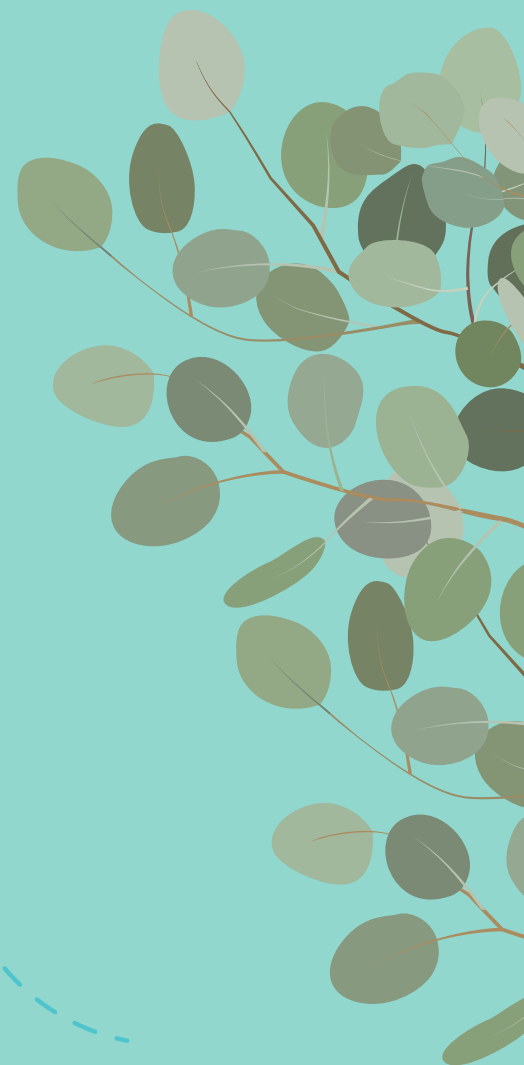
LARGE OLD TREES
PROVIDE HABITAT
AND FOOD SOURCES FOR



THREATENED BIRDS



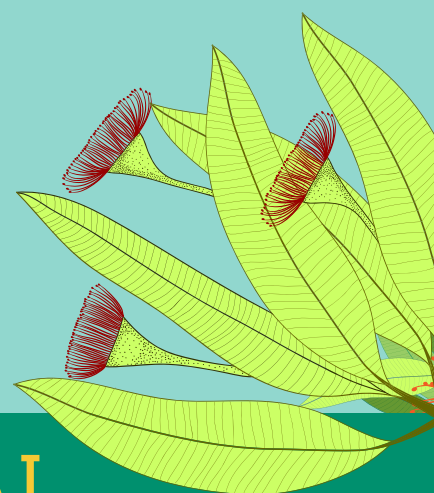
MAMMALS



REPTILES



AND AMPHIBIANS.

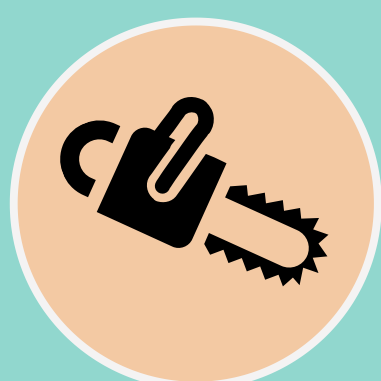


MAKING THEM VITAL
LANDSCAPE CONNECTORS.

BUT EVEN HEROES NEED ALLIES.



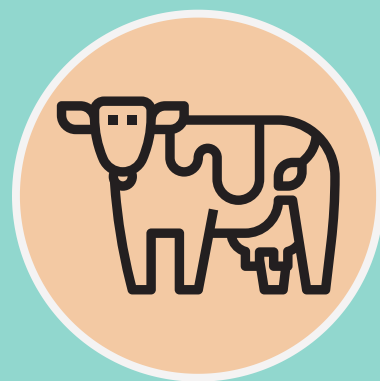
LARGE OLD TREES ARE BECOMING INCREASINGLY HARD TO FIND BECAUSE OF:



'CLEANING UP'
DEAD AND
FALLEN TIMBER



REMOVAL
OF UNDERSTOREY



SET-STOCKING



CROPPING



SOWING OF
EXOTIC PASTURES



CHEMICALS

ITS TIME FOR US TO STEP IN AND GIVE THEM A HELPING HAND!

LETS PROTECT AND REVITALISE NATURE'S ELDERS.

YOU CAN START BY HELPING US MAP THE LARGE OLD TREES IN YOUR REGION.

GO TO:

biolinksalliance.org.au/protect-and-connect

AND FIND OUT HOW.